



**IDAHO  
HEAD START  
ASSOCIATION**

## Annual Report

Program Year 2017 - 2018

Impact 3  
Head Start 4  
in Idaho  
Early Head 6  
Start in Idaho  
Whole Family 8  
Engagement  
TANF 9  
Head Start 10  
Advantage  
Mission 11

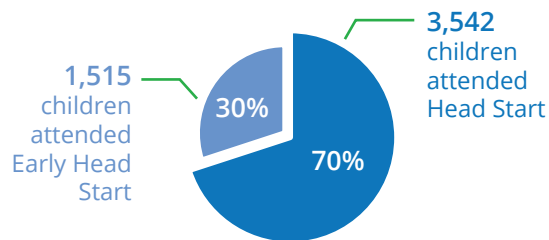
## Leading the Way

EVERY CHILD, REGARDLESS OF CIRCUMSTANCES AT BIRTH, HAS THE ABILITY TO REACH THEIR FULL POTENTIAL.

When disadvantaged children receive high-quality birth-to-five education, such as Early Head Start plus Head Start, the return on investment can be as high as 13%. Funded by the federal government, Head Start and Early Head Start's goal is to increase school readiness and social competence of young children in low-income families, understanding that children develop best in the context of their family and culture. Parents are respected as their child's first and most important teacher and caregiver.

## Each Child is Unique and Important

The entire range of Head Start and Early Head Start services are responsive to each child and family's developmental, ethnic, cultural and linguistic heritage and experience. The programs are dedicated to serving children with disabilities, ensuring they fully participate in all aspects of the classroom. Each Head Start program must work with their local school districts so there is a seamless move into the school system to ensure the child's optimal development.



17%  
of eligible children,  
ages 0-5, had access to  
Head Start programs

# Impact

In 2018, 13 Idaho Head Start and Early Head Programs, at 78 sites, served:

5,057

children  
aged 0-5

146

Idaho  
communities

113

pregnant  
women, and  
their families

39

Idaho  
counties

300

classrooms

6,970

volunteers



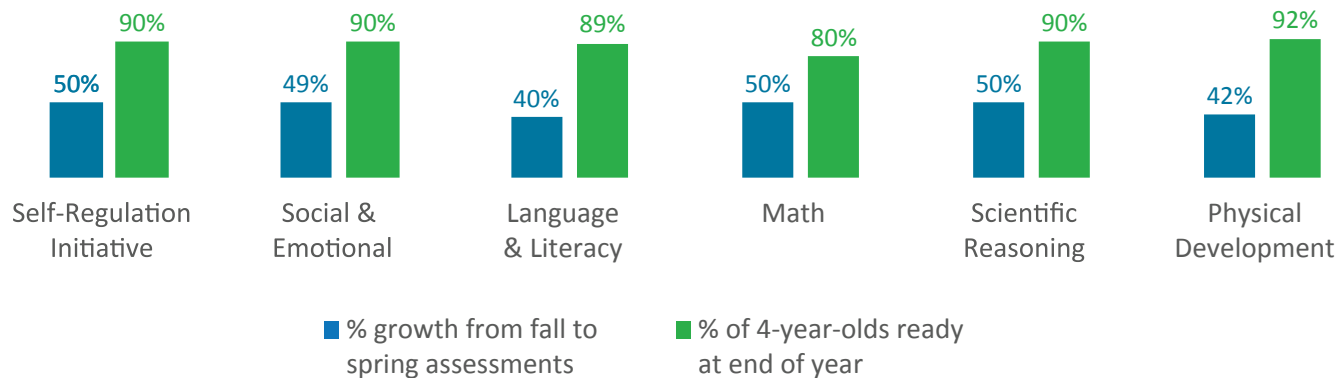


## Head Start

Head Start is a comprehensive child and family-focused preschool program designed to help low-income and at-risk 3 and 4-year-old children and their families succeed in school and life. Head Start provides children with activities that help them grow mentally, socially, emotionally and physically. Head Start children socialize with others, solve problems and have other experiences that help them to become self-confident. The program ensures that young children get health checkups and treatment, oral health examinations and are fed a nutritious hot meal every day.

## School Readiness

Head Start is the nation's most successful school readiness program - children are ready for school and families are ready to support their child's learning. School readiness is measured by six learning domains:



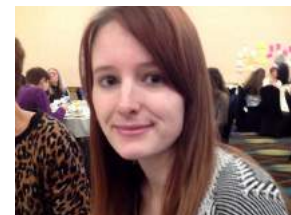
School readiness outcomes are assessed in fall, winter and spring. To see a full description of each learning domain, visit [www.idahohsa.org](http://www.idahohsa.org).



**At a very young age,** I was taken away from my home and placed in foster care where I moved from home to home. I was enrolled in a Head Start program and adopted when I was five.

Today, I get to work with Early Head Start and Head Start and give back what they gave to me - it's a great opportunity. Head Start gave me the tools and social and emotional skills I needed to be who I am today. It also helped me create bonds with people, family and friends. Even though I'm almost 30, I still remember things I did in the Head Start class and the tools they gave to me to take on hardships I'm faced with in today's world.

- Patty M. -





## Early Head Start

Early Head Start programs provide intensive comprehensive child development and family support services to low-income infants and toddlers under the age of three and their families, and to pregnant women and their families. Services encompass the full range of a family's needs from pregnancy through a child's third birthday.

## Why the Early Years Matter

Children are learning from the moment they are born. Brain growth, approaches to life and learning, language skills are all shaped by what does – or does not – happen in a child's first days, months and years.

During the first three years, more than one million new neural connections are formed every second. These are the connections that build brain architecture – the foundation upon which all later learning, behavior and health depend.



**I didn't know how to help my son progress.** He would make progress one day and then refuse to do the same thing the next day. When Early Head Start stepped in, they gave us so many more tools! They also really supported me and my son and taught me what was considered 'normal' for his age. Since my son has been enrolled in Mountain States Early Head Start, his communication skills have improved tremendously.

- Sarah J. -



## Home Visiting

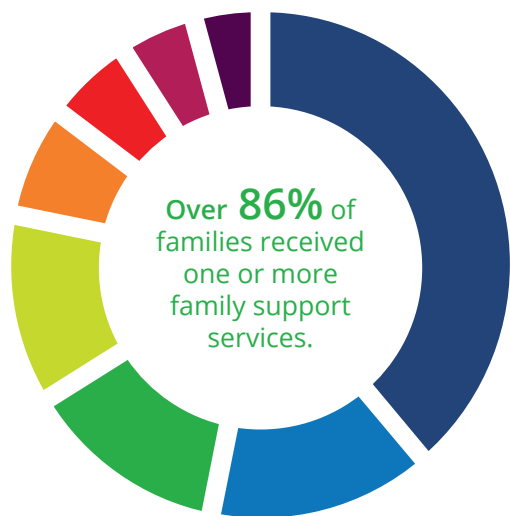
Early Head Start is designed to nurture healthy attachments between parent and child (and child and caregiver). Home visiting is an integral part of the program, providing education and child development services in the home.

Most of Idaho's Early Head Starts are home-based and include weekly home visits and twice monthly group socializations.



## Whole Family Engagement

Head Start Programs support parents in their role as primary caregivers and first, most important teacher. Programs build relationships with families that support positive parent-child relationships, family well-being and community connections. We offer family members opportunities for growth, and offer guidance as they seek to meet personal goals and achieve self-sufficiency. This two-generation approach supports stability and long-term success for the families who are most at risk.



Top 8 Services Accessed

Families Assisted	Service
2,833	Parenting Education
1,046	Emergency/Crisis Intervention
951	Mental Health Services
874	Substance Abuse Prevention/Treatment
517	Asset Building Services
410	Housing Assistance
358	Child Abuse/Neglect Services
310	Job Training

## By the end of the school year, children have received:

- Health and nutrition services
- Appropriate well child medical and dental screenings
- Mental health services
- Referrals for diagnosed health conditions (e.g. hearing, vision and asthma)



**96%** Had access to a primary physician



**88%** Had continuous access to dental care



**78%** Were up-to-date on all immunizations

## TANF Head Start Program

TANF Head Start is funded through Idaho's Temporary Assistance for Needy Families (TANF) program and serves 161 additional 3 and 4-year-old children. It provides the same Head Start services while highlighting family strengthening, goal setting and building skills toward self-sufficiency.

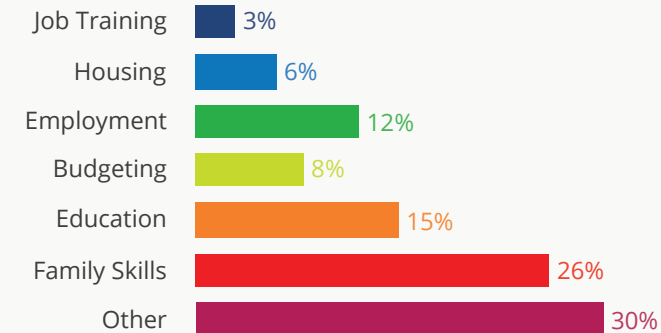
### Targeted Family Goal Setting

Goals Set:

250

Goals Achieved:

178



The Most Utilized Services Include: Communication & Literacy Skills, Developmental Assessments & Screenings, Goal Setting & Family Partnerships, Health Education, Hearing & Vision Screenings, Home Visitation, Parent Leadership & Involvement, Social/Emotional Screenings, Volunteering Opportunities

4,561

Support Services Provided to Families

## The Head Start Advantage

### Two Life Trajectories

Invest Now



#### Kindergarten Readiness

Children who attend Head Start have better language, cognitive and pre-literacy skill



#### Better Social & Emotional Skills

Head Start means better social skills, fewer attention problems, more impulse control and decreased aggression and hyperactivity



#### Higher Education Levels

Head Start alumni are less likely to repeat a grade, and more likely to graduate from high school and attend college



#### Longer, Healthier Lives

Head Start alumni are less likely to be in poor health and smoke, less likely to be arrested and on average have higher earnings

Spend Later



#### Remediation & Special Education

Without high-quality early learning experiences, children are more likely to need remediation and special education



#### Less Parental Involvement

Non-Head Start parents spend less time reading to their children; and non-Head Start children have less time with absent fathers



#### Difficulties in Education

Students who were not in Head Start are more likely to have lower math scores, attendance rates and high school grad. rates



#### Poorer, Sicker Lives

People without access to Head Start are more likely to be in poor health, charged with a crime and have lower earnings

## Our Association

The Idaho Head Start Association (IHSA) is the statewide membership organization composed of representatives from Head Start, Early Head Start, Migrant Head Start, and Native American Head Start. The association was incorporated as a nonprofit organization in 1995.

## Mission

Idaho Head Start Association supports Head Start programs through advocacy, professional development and collaboration to achieve high-quality outcomes for Idaho's children, families and communities.

**Advocacy:** IHSA provides a strong voice in Boise and in Washington, DC as our legislators make decisions that affect low-income children and families.

**Professional Development:** IHSA provides ongoing training for staff, parents and directors of Head Start programs. The focused training helps programs maintain a high level of quality in teaching, program governance, management and family support services. Parents are also provided training in leadership development and advocacy.

**Collaboration:** IHSA meetings and trainings provide an invaluable opportunity for Head Start employees to work together, share ideas and make plans for future program improvements. IHSA also works extensively with early childhood education organizations and leaders to expand the opportunities of Head Start programs and families.



# 13 Head Start & Early Head Start Programs

## BEAR RIVER HEAD START

Serving Bear Lake, Caribou, Franklin, Oneida and Southern Bannock Counties  
(435) 755- 0081

## COEUR D' ALENE TRIBE EARLY CHILDHOOD LEARNING CENTER

Serving the Coeur d' Alene Tribe in Kootenai and Benewah Counties  
(208) 686- 8506

## COLLEGE OF SOUTHERN IDAHO HEAD START

Serving Cassia, Gooding, Jerome, Lincoln, Minidoka, Power and Twin Falls Counties  
(208) 736- 0741

## COMMUNITY COUNCIL OF IDAHO – MIGRANT AND SEASONAL HEAD START

Serving Migrant and Seasonal Farmworker Families in Ada, Bingham, Bonneville, Canyon, Cassia, Clark, Elmore, Fremont, Gem, Gooding, Jefferson, Jerome, Lincoln, Madison, Minidoka, Owyhee, Payette, Power, Twin Falls and Washington Counties  
(208) 454- 1652

## EASTERN IDAHO COMMUNITY ACTION PARTNERSHIP HEAD START

Serving Bingham, Bonneville, Lemhi, Madison and Teton Counties  
(208) 522- 5391

## FRIENDS OF CHILDREN AND FAMILIES

Serving Ada and Elmore Counties  
(208) 344- 9187

## LEWIS – CLARK EARLY CHILDHOOD PROGRAM

Serving Clearwater, Idaho, Latah, Lewis, and Nez Perce Counties in Idaho and Asotin County in Washington State  
(208) 743- 6573

## MOUNTAIN STATES EARLY HEAD START

Serving children birth to 3 and pregnant women in Bonner, Kootenai and Shoshone Counties  
(208) 765- 6955

## NEZ PERCE TRIBE MAMÁY 'ASNIM HITÉEMENWEES

Serving the Nez Perce Tribe in Idaho, Lewis, Nez Perce and Clearwater Counties  
(208) 843- 7330

## NORTH IDAHO COLLEGE HEAD START

Serving Benewah, Bonner, Boundary, Kootenai and Shoshone Counties  
(208) 666- 6755

## POCATELLO/CHUBBUCK SCHOOL DISTRICT #25 HEAD START

Serving Bannock County  
(208) 233- 6606

## SHOSHONE- BANNOCK TRIBES HEAD START

Serving the Shoshone- Bannock Tribes in Bannock, Bingham and Power Counties  
(208) 239- 4500

## WESTERN IDAHO COMMUNITY ACTION PARTNERSHIP HEAD START

Serving Canyon, Gem, Owyhee, Payette, Valley and Washington Counties  
(208) 642- 9086

## Idaho Head Start Association

223 N. 6th Street, Suite 435  
Boise, Idaho 83702  
P: (208) 345-1182  
[www.idahohsa.org](http://www.idahohsa.org)

### Bill Foxcroft

Executive Director  
[bfoxcroft@idahohsa.org](mailto:bfoxcroft@idahohsa.org)

For a full listing of Idaho Head Start Programs, addresses and contact information, please visit [www.idahohsa.org](http://www.idahohsa.org)

